

Celebrating Christmas

By Anni Downs



A Free Project Sheet
NOT FOR RESALE

Quilt Design by Anni Downs




Blue Version



Cream Version

Quilt 1

Skill Level: Intermediate

 Henry Glass & Co., Inc.



facebook

Finished Quilt Size: 69" x 69"
49 West 37th Street, New York, NY 10018
tel: 212-686-5194 fax: 212-532-3525
Toll Free: 800-294-9495
www.henryglassfabrics.com

CELEBRATING CHRISTMAS Finished Quilt Size: 69" x 69"

Quilt 1

Fabrics in the Collection



Large Characters w/ Border - Lt. Blue
8750-11



Large Characters w/ Border - Cream
8750-44



Stripe - Pink
8751-22



Stripe - Taupe
8751-38



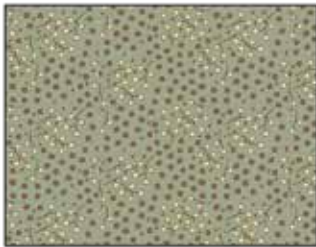
Sprig Toss - Lt. Blue
8752-11



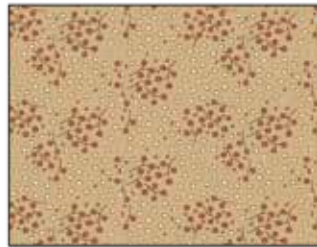
Sprig Toss - Tan
8752-33



Sprig Toss - Red
8752-88



Berries - Lt. Blue
8753-11



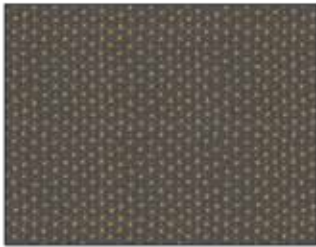
Berries - Tan
8753-33



Berries - Brown
8753-38



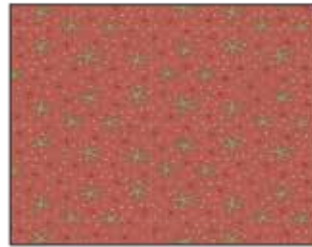
Mini Snowflakes - Cream
8754-44



Mini Snowflakes - Navy
8754-77



Mini Snowflakes - Red
8754-88



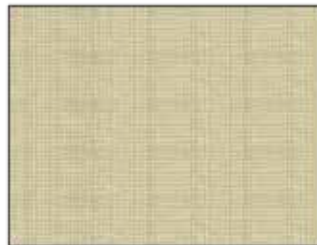
Large Snowflakes - Pink
8755-22



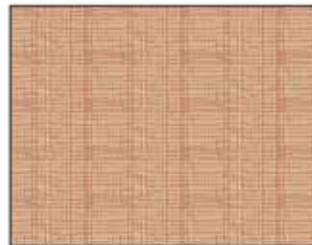
Large Snowflakes - Taupe
8755-39



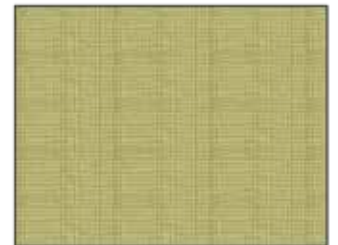
Large Snowflakes - Cream
8755-44



Mini Check - Cream Blue
8756-41



Mini Check - Cream Red
8756-42



Mini Check - Green
8756-66

CELEBRATING CHRISTMAS Quilt 1 Page 1

Materials

¼ yard	Mini Check - Cream/Blue (A)	8756-41
⅜ yard	Large Snowflakes - Pink (B)	8755-22
½ yard	Sprig Toss - Tan (C)	8752-33
⅞ yard	Stripe - Pink (D)	8751-22
⅜ yard	Berries - Brown (E)	8753-38
¼ yard	Sprig Toss - Lt. Blue (F)	8752-11
¼ yard	Mini Snowflakes - Red (G)	8754-88
⅜ yard	Large Snowflakes - Cream (H)	8755-44
⅛ yard	Mini Snowflakes - Navy (I)	8754-77
¼ yard	Sprig Toss - Red (J)	8752-88
1 ⅛ yards	Large Snowflakes - Taupe (K)	8755-39
¼ yard	Mini Snowflakes - Cream (L)	8754-44
1 yard	Stripe - Taupe (M)	8751-38*
⅛ yard	Berries - Tan (N)	8753-33
1 ¾ yards	Large Characters w/Border - Lt. Blue (O)	8750-11
	[Large Characters w/Border - Cream (O)	8750-44]**
4 ⅓ yards	Berries - Lt. Blue (Backing)	8753-11

*Includes binding

** Cream Version

Cutting Instructions

Please note: all strips are cut across the width of fabric (WOF) from selvage to selvage edge unless otherwise noted.

From the Mini Check - Cream/Blue (A), cut:

- (32) Template 1 diamonds.

From the Large Snowflakes - Pink (B), cut:

- (32) Template 2 diamonds.
- (16) Template 1 diamonds.

From the Sprig Toss - Tan (C), cut:

- (3) 2 ⅜" x WOF strips. Sub-cut strips into (48) 2 ⅜" squares. Cut the squares across (1) diagonal to make (96) triangles.
- (3) 2" x WOF strips. Sub-cut strips into (48) 2" squares.

From the Stripe - Pink (D), cut:

- (4) 6 ½" x WOF strips. Sub-cut strips into (64) 2" x 6 ½" strips.

From the Berries - Brown (E), cut:

- (32) Template 1 diamonds.
- (2) 2" x WOF strips. Sub-cut strips into (32) 2" squares.

From the Sprig Toss - Lt. Blue (F), cut:

- (32) Template 2 diamonds.

From the Mini Snowflakes - Red (G), cut:

- (2) 2" x WOF strips. Sub-cut strips into (32) 2" squares.

From the Large Snowflakes - Cream (H), cut:

- (2) 2 ⅜" x WOF strips. Sub-cut strips into (32) 2 ⅜" squares. Cut the squares across (1) diagonal to make (64) triangles.
- (2) 2" x WOF strips. Sub-cut strips into (32) 2" squares.

From the Mini Snowflakes - Navy (I), cut:

- (1) 2" x WOF strip. Sub-cut strip into (20) 2" squares.

From the Sprig Toss - Red (J), cut:

- (20) Template 1 diamonds.

From the Large Snowflakes - Taupe (K), cut:

- (20) Template 2 diamonds.
- (1) 2" x WOF strip. Sub-cut strip into (16) 2" squares.
- (4) 3 ½" x WOF strips. Sew the strips together end to end with diagonal seams and cut (2) 3 ½" x 69 ½" WOF strips.
- (4) 3 ½" x WOF strips. Sew the strips together end to end with diagonal seams and cut (2) 3 ½" x 63 ½" WOF strips.

From the Mini Snowflakes - Cream (L), cut:

- (2) 2 ⅜" x WOF strips. Sub-cut strips into (20) 2 ⅜" squares. Cut the squares across (1) diagonal to make (40) triangles.
- (1) 2" x WOF strip. Sub-cut strip into (20) 2" squares.

From the Stripe - Taupe (M), cut:

- (2) 6 ½" x WOF strips. Sub-cut strips into (36) 2" x 6 ½" strips.
- (7) 2 ½" x WOF strips for the binding.

From the Berries - Tan (N), cut:

- (16) Template 2 diamonds.

From the Large Characters w/Border - Lt. Blue (O) (Blue Version) Large Characters w/Border - Cream (O) (Cream Version), cut:

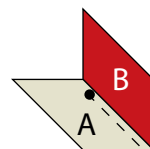
- (6) 9 ½" x WOF strips. Sub-cut strips into (24) 9 ½" squares.

From the Berries - Lt. Blue (Backing), cut:

- (2) 77" x WOF strips for the backing. Sew the strips together and trim to make the 77" x 77" back.

Sewing Instructions

1. Place one Fabric B-Template 2 diamond on top of one Fabric A-Template 1 diamond, right sides together, aligning the right sides as shown in Figure 1. Sew the two diamonds together along the right side, stopping ¼" from the end. Press the block open to make (1) AB unit.



Sew the two templates together stopping ¼" from the end

Fig. 1

2. Sew (1) 2" Fabric C square to the AB unit using a Y-seam (Fig. 2).

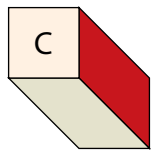


Fig. 2

Sew the C square to the templates using a Y-Seam

3. Sew (1) Fabric C triangle to opposite sides of the AB unit as shown in Figure 3 to make (1) ABC block.

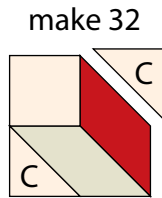


Fig. 3

4. Repeat Steps 1-3 to make (32) ABC blocks total.

5. Sew (4) ABC blocks together to make (1) Unit 1 block (Fig. 4). Repeat to make (8) Unit 1 blocks total.

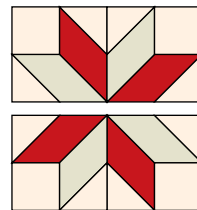


Fig. 4

6. Sew (1) 2" x 6 1/2" Fabric D strip to each side of (1) Unit 1 block. Sew (1) 2" Fabric E square to each end of (1) 2" x 6 1/2" Fabric D strip. Repeat to make a second strip. Sew the strips to the top and to the bottom of the Unit 1 block to make (1) Block One (Fig. 5). Repeat to make (8) Block Ones total.

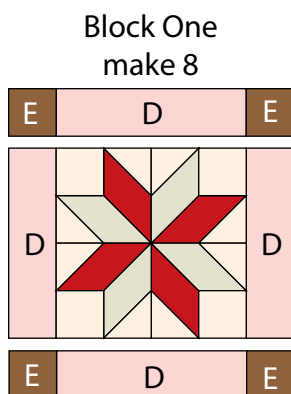


Fig. 5

7. Repeat Steps 1-6 and use Figures 6-8 for fabric identification and location to make (8) Block Twos, (5) Block Threes and (4) Block Fours.

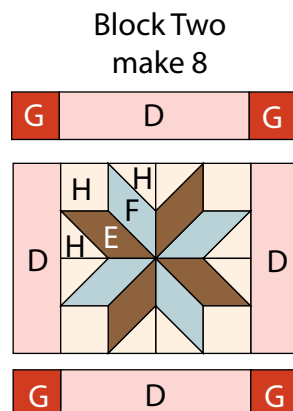


Fig. 6

Block Three
make 5

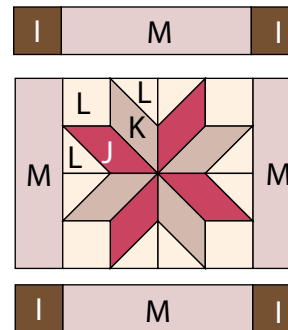


Fig. 7

Block Four
make 4

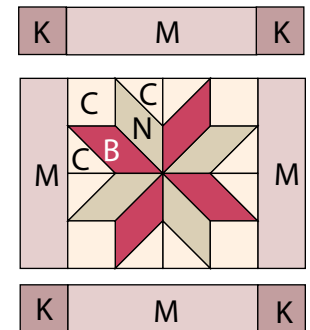


Fig. 8

Quilt Top Assembly

(Refer to the *Quilt Layout* while assembling.)

8. Sew (1) Block One, (1) 9 1/2" Fabric O square, (1) Block Two, (1) 9 1/2" Fabric O square, (1) Block One, (1) 9 1/2" Fabric O square and (1) Block Two together, in that order, to make Row One. Repeat to make Row Five.

9. Sew (1) 9 1/2" Fabric O square, (1) Block Three, (1) 9 1/2" Fabric O square, (1) Block Four, (1) 9 1/2" Fabric O square, (1) Block Three and (1) 9 1/2" Fabric O square to make Row Two. Repeat to make Row Six.

10. Sew (1) Block Two, (1) 9 1/2" Fabric O square, (1) Block One, (1) 9 1/2" Fabric O square, (1) Block Two, (1) 9 1/2" Fabric O square and (1) Block One together, in that order, to make Row Three. Repeat to make Row Seven.

11. Sew (1) 9 1/2" Fabric O square, (1) Block Four, (1) 9 1/2" Fabric O square, (1) Block Three, (1) 9 1/2" Fabric O square, (1) Block Four and (1) 9 1/2" Fabric O square to make Row Four.

12. Sew the (7) rows together in numerical order to make the Center Block.

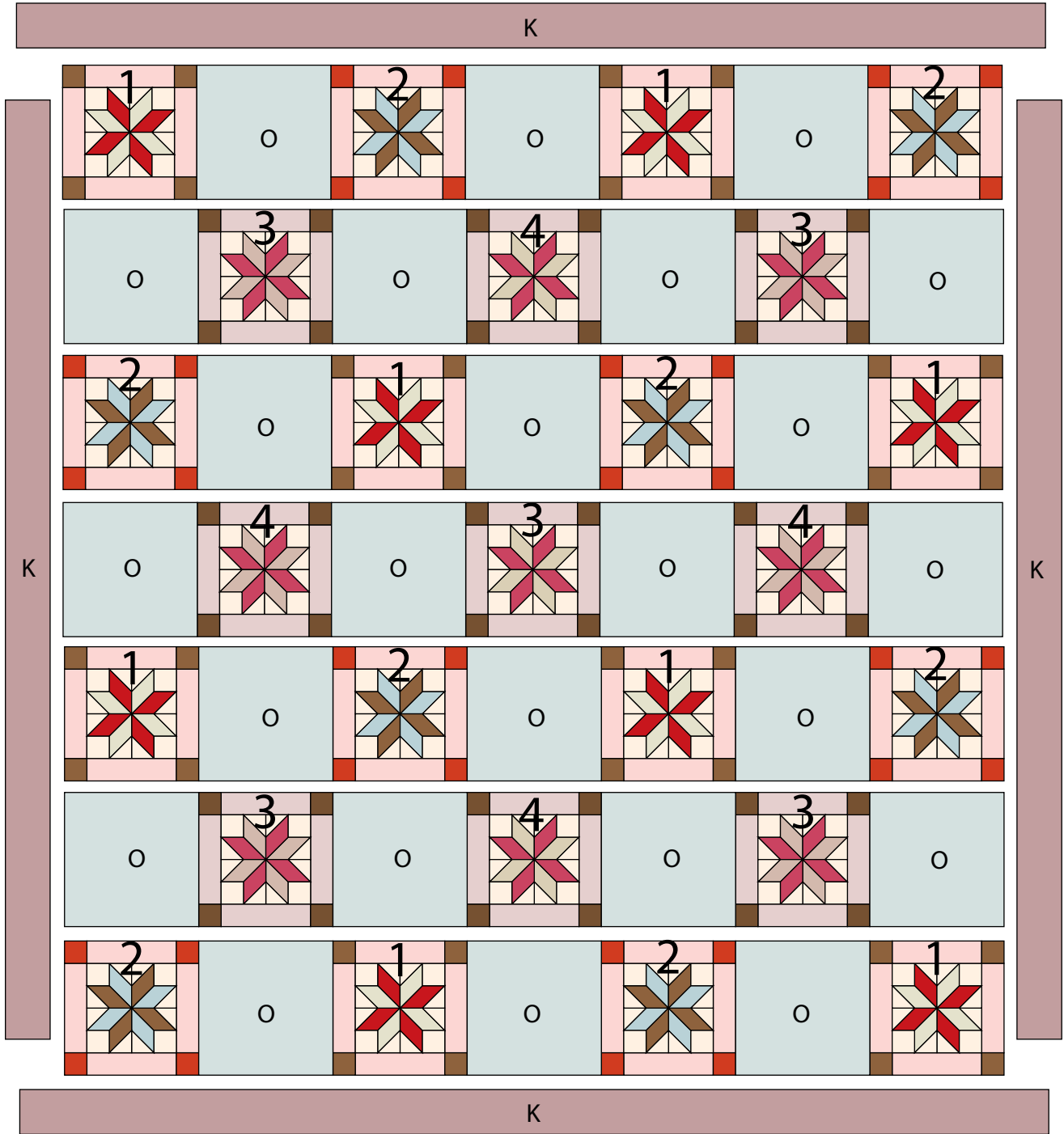
13. Sew (1) 3 1/2" x 63 1/2" Fabric K strip to each side of the Center Block. Sew (1) 3 1/2" x 69 1/2" Fabric K strip to the top and to the bottom of the Center Block to make the quilt top.

14. Layer and quilt as desired.

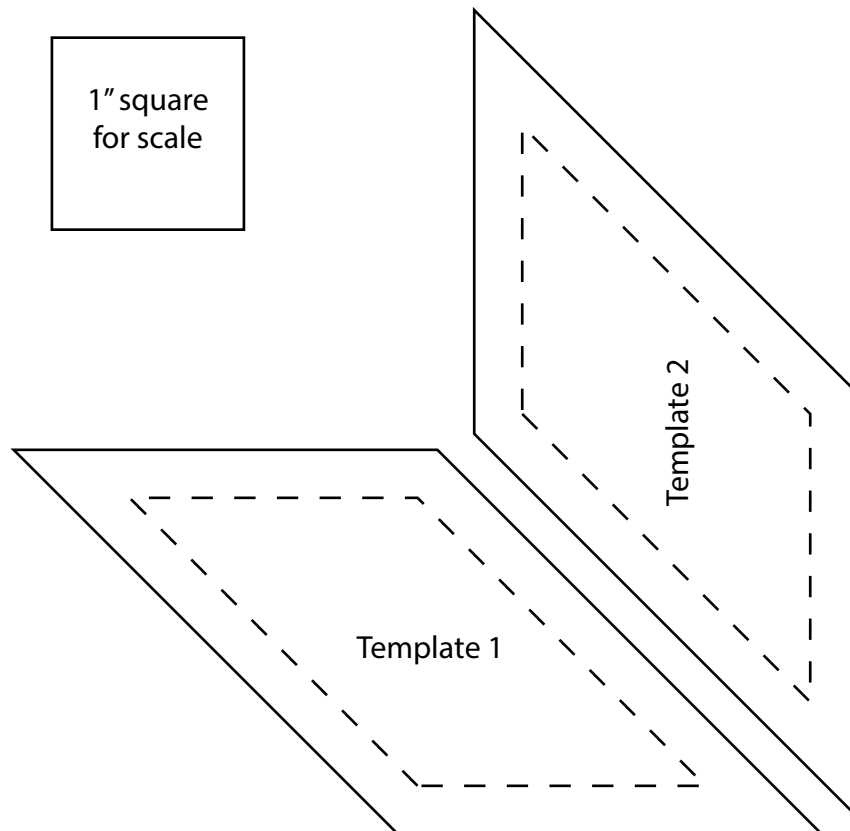
15. Sew the (7) 2 1/2" x WOF Fabric M strips together, end to end with 45-degree seams, to make the binding. Fold this long strip in half lengthwise with wrong sides together and press.

16. Bind as desired.

CELEBRATING CHRISTMAS Quilt 1 Page 3



Quilt Layout



*Every effort has been made to ensure that all projects are error free. All the information is presented in good faith, however no warranty can be given nor results guaranteed as we have no control over the execution of instructions. Therefore, we assume no responsibility for the use of this information or damages that may occur as a result. When errors are brought to our attention, we make every effort to correct and post a revision as soon as possible. Please make sure to check www.henryglassfabrics.com for pattern updates prior to starting the project. We also recommend that you test the project prior to cutting for kits. Finally, all free projects are intended to remain free to you and are **not for resale**.*